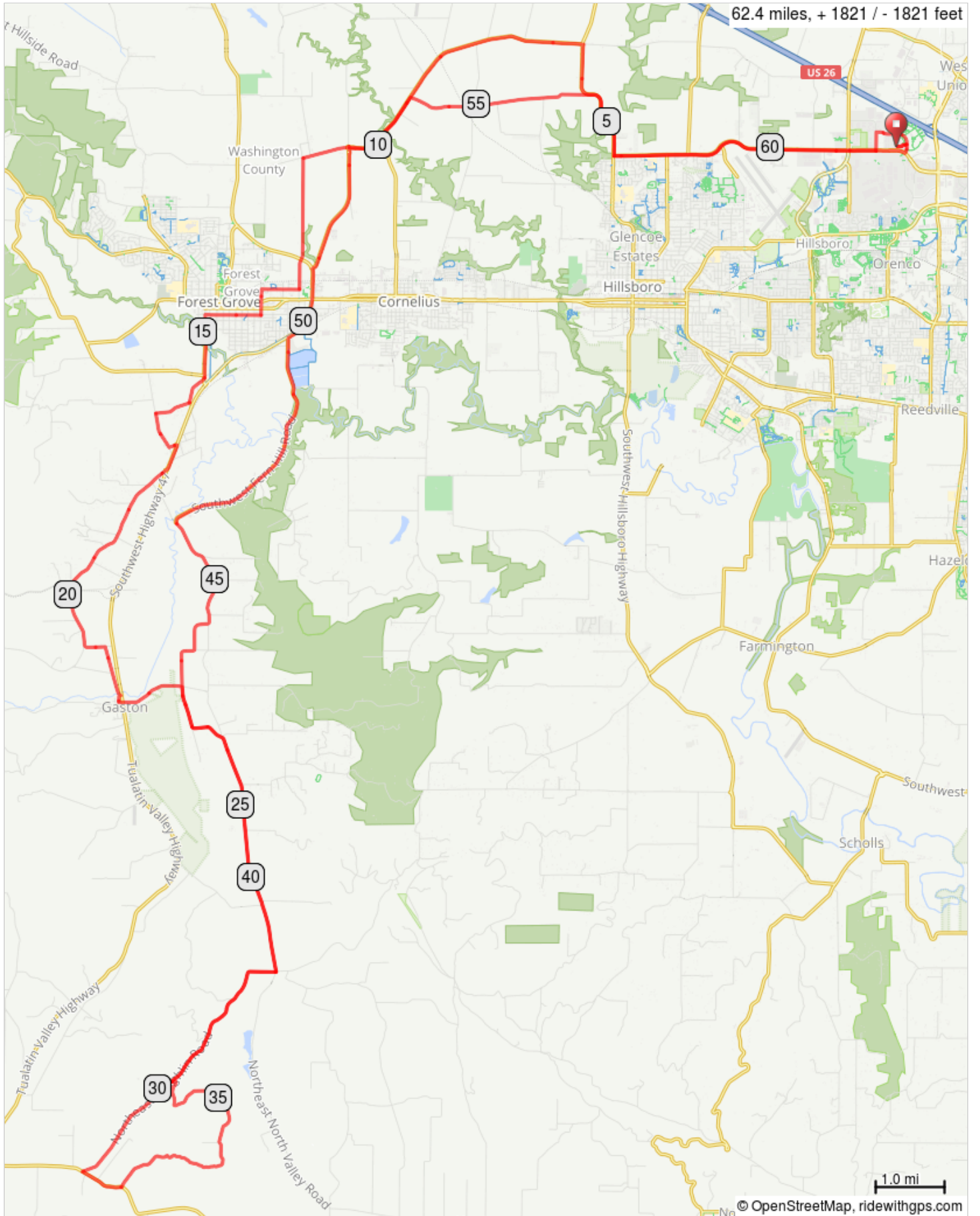


Woodland Metric



Woodland Metric			Distance: 62.4 Miles			Elevation: 1822 ft		
R	0.1	Century	R	16.1	Hiatt	R	36.2	Laughlin
R	0.3	Evergreen	L	16.6	Dilley	L	38.6	Spring Hill
R	4.5	Glencoe	L	17.1	Dudney	R	46.1	Fern Hill
R	5.6	Glencoe	R	17.2	OR-47 S	R	49.7	OR-47 N
L	6.3	Zion Church	R	17.6	Old Hwy 47	R	50.8	Martin
BeC	8.4	Cornelius Schefflin	L	20.7	Old Hwy 47	O	52.7	Verboort (1st exit)
O	10.0	Verboort (1st exit)	R	21.0	Old Hwy 47	O	53.2	Cornelius Schefflin (1st exit)
O	10.5	Verboort (2nd exit)	R	21.8	Mill	R	54.0	Wren
L	11.1	Porter	L	21.8	2nd	BeC	56.6	Glencoe
X	12.6	Cross OR-47	L	21.9	Main	L	57.7	Evergreen
BeC	12.6	Oak	X	22.0	Cross OR-47	L	61.5	235th
R	13.0	22nd	BeC	22.1	Gaston	R	61.8	Bennett
L	13.6	Hawthorne	R	22.9	Spring Hill	BeC	62.1	Century
R	13.9	18th	R	27.4	Laughlin	R	62.3	Dog Park
L	14.7	B	L	31.6	OR-240 E/Yamhill-Newberg Hwy	62.4	Finish	
R	15.6	Old Hwy 47	L	32.3	Woodland Loop			

Key: R=right turn; L=left turn; U=u turn; O=roundabout; BeC=becomes new Rd name; X=cross major Rd

